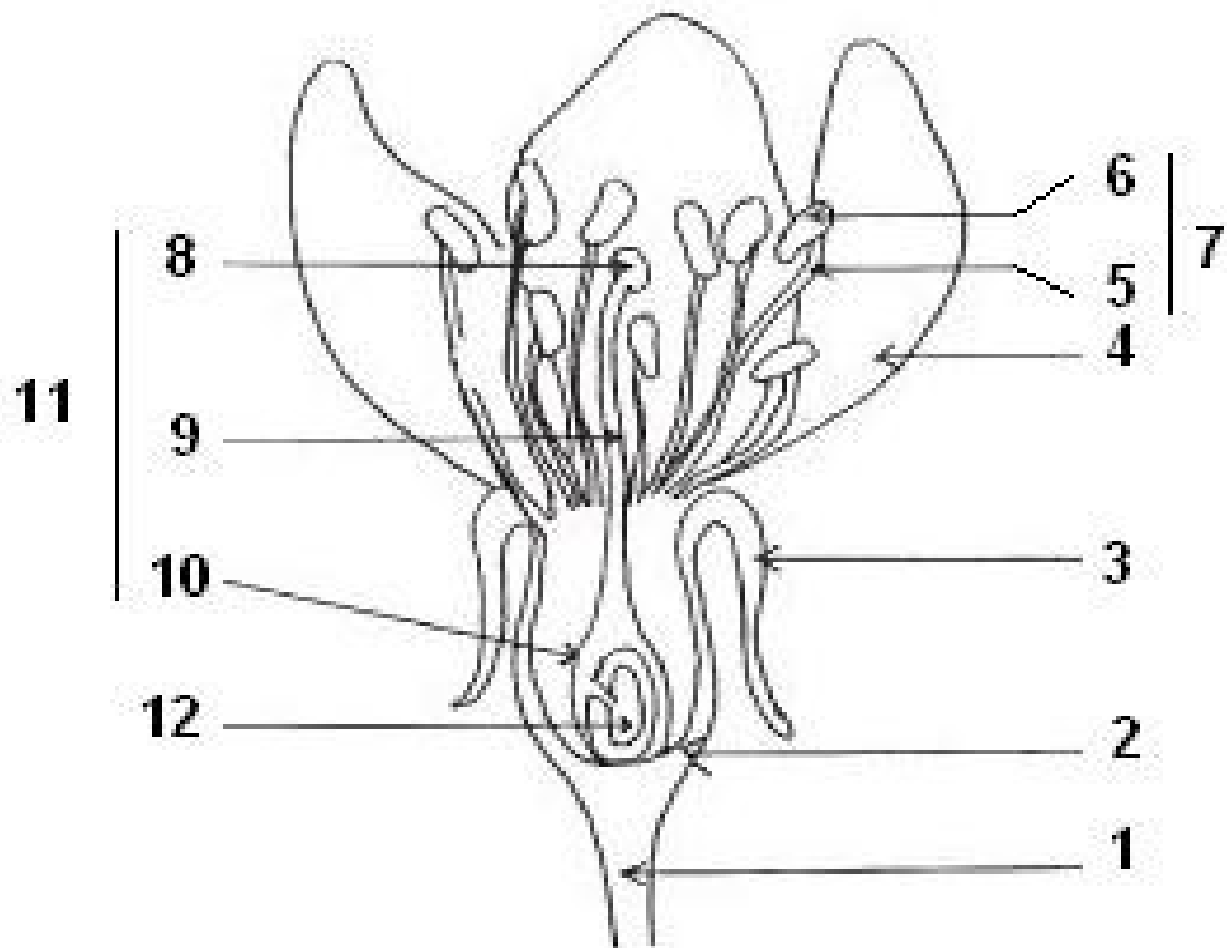
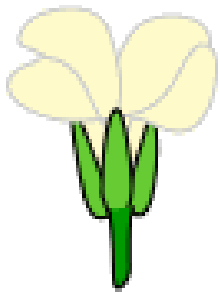
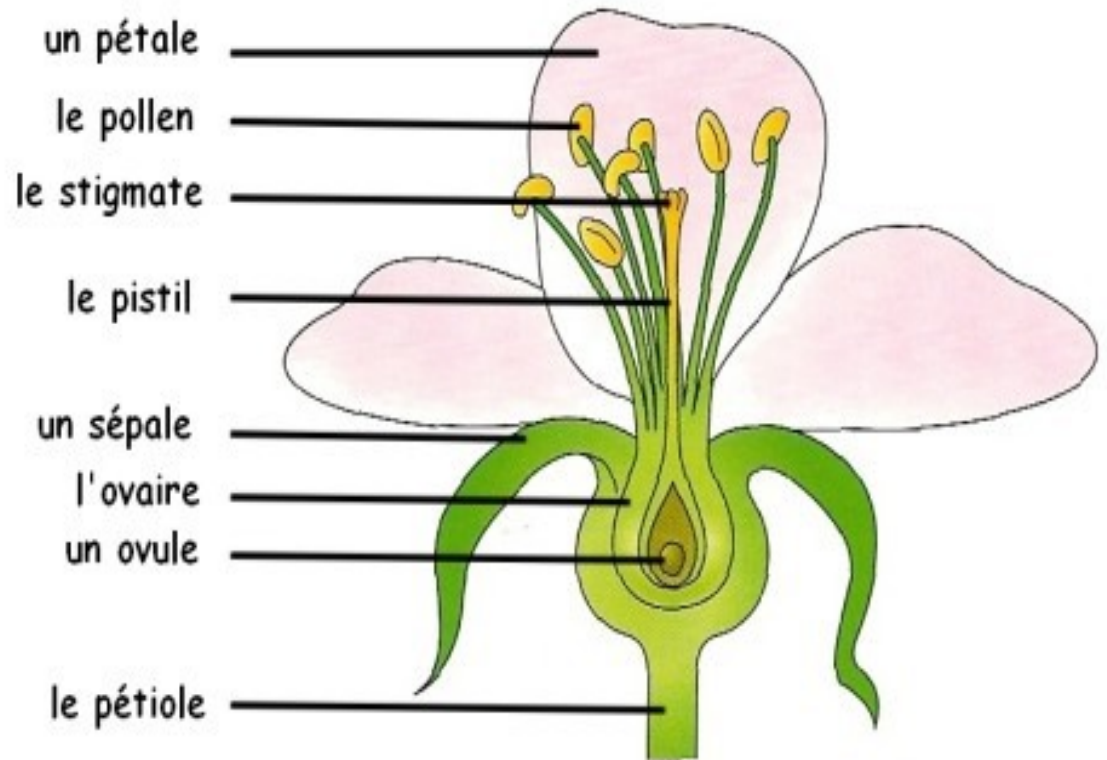


Cours de Botanique

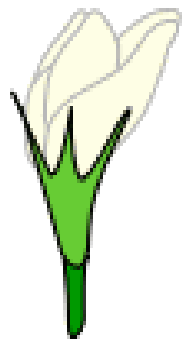
2ème leçon



Cerisier. Fleur



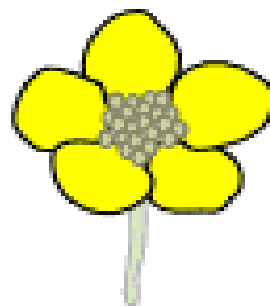
Calice à
sépalés libres



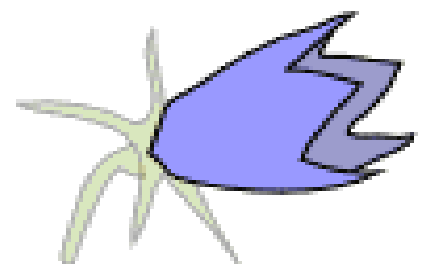
Calice à
sépalés soudés



Calice doublé
d'un calicule

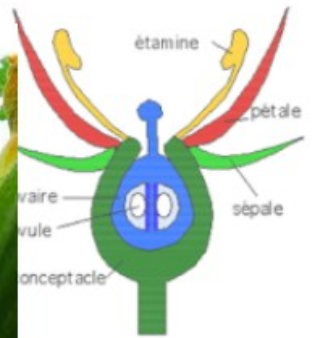
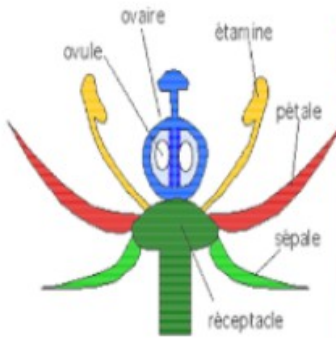


Corolle à
pétales libres



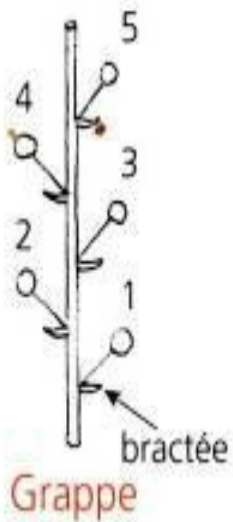
Corolle à
pétales soudés

La disposition de l'ovaire

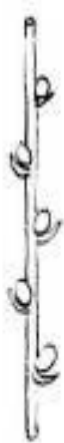


Ovaire supère :
L'ovaire est située
au-dessus des sépales

Ovaire infère :
L'ovaire est située
en dessous des sépales



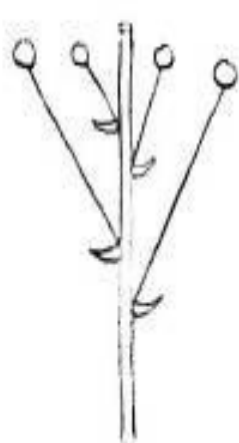
Grappe



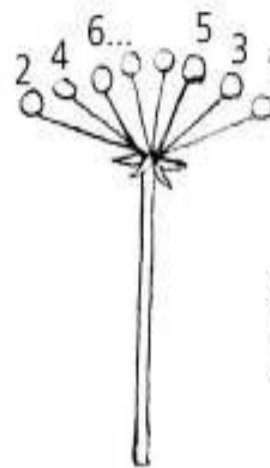
Épi
(blé)



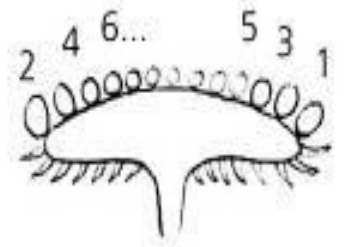
Glomérule
(menthe)



Corymbe
(pommier)



Ombelle
(carotte)



Capitule
(marguerite)

La transformation d'une fleur en fruit

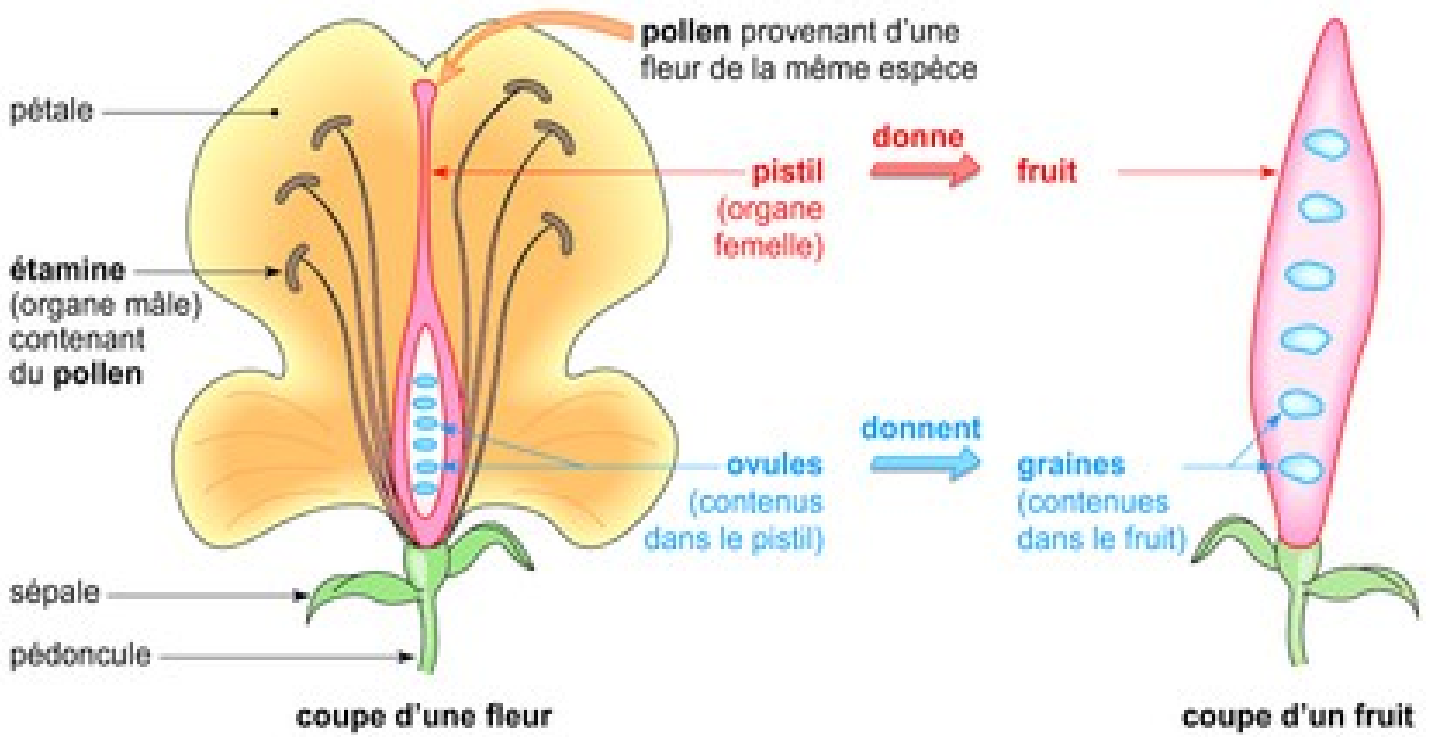


Diagramme floral

